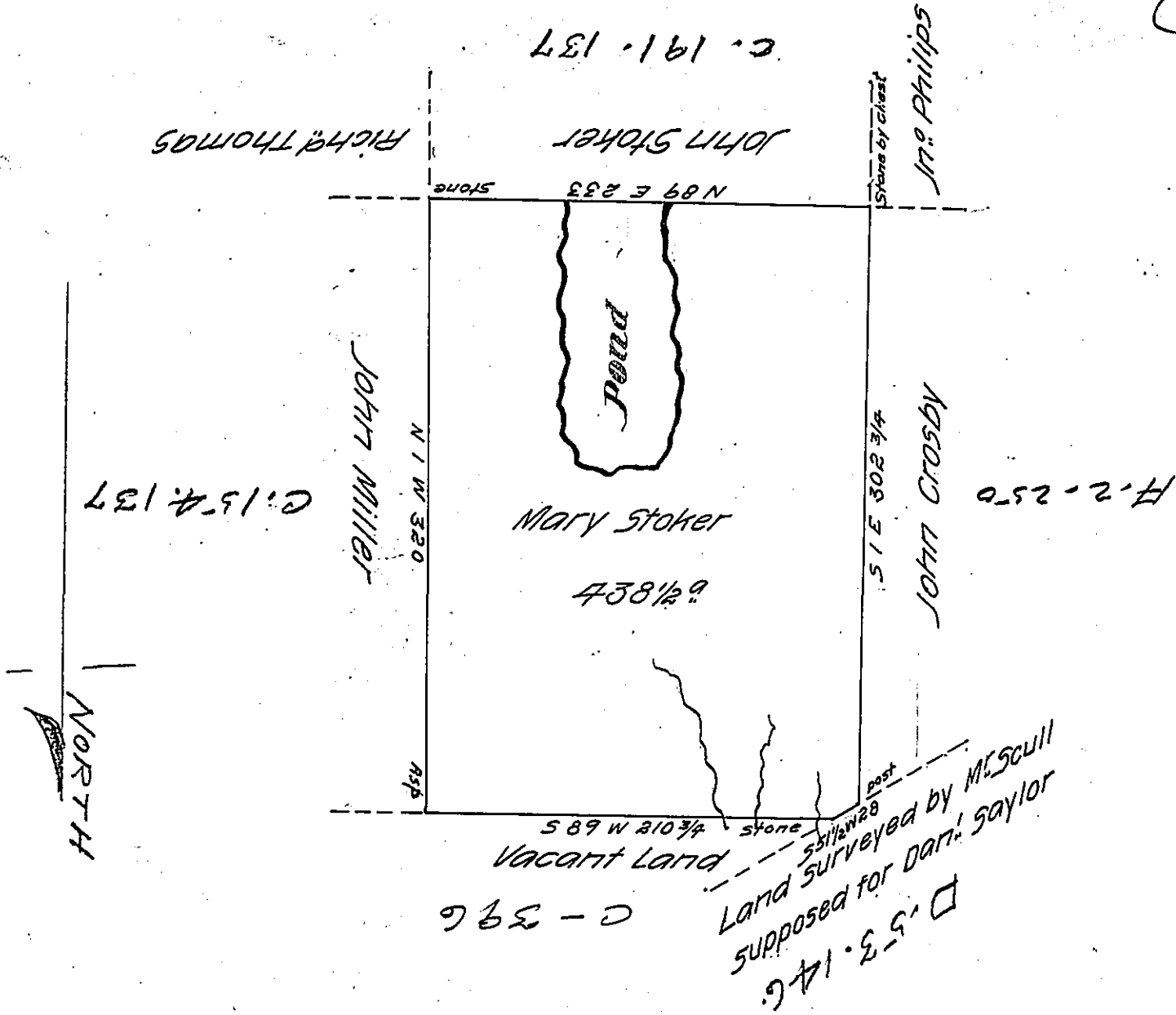


Bl. Grove -
(PIKE)



By virtue of a warrant dated the 11th February 1793 surveyed the
 24 June 1793 to Mary Stoker the above described tract of land situate
 on a branch of Shoholy creek in the County of Northampton containing
 four hundred and thirty eight acres an half and the allowance of six P
 cent &c?

To Daniel Brodhead Esq. } P-Geo Palmer D.S.
 Surveyor General

IN TESTIMONY that the above is a copy of the original remaining on file in
 the Department of Internal Affairs of Pennsylvania, made
 conformably to an Act of Assembly approved the 16th day of
 February, 1833, I have hereunto set my Hand and caused
 the Seal of said Department to be affixed at Harrisburg,
 this sixteenth day of October 1906

Geo. Palmer
 Secretary of Internal Affairs.